



TLP:GREEN = Begrenset offentliggjøring  
(begrenset til næringen)



# Error Handling

**DSOP Control Information Common Standard - Operational processes**



Brønnøysundregistrene



# Error Handling

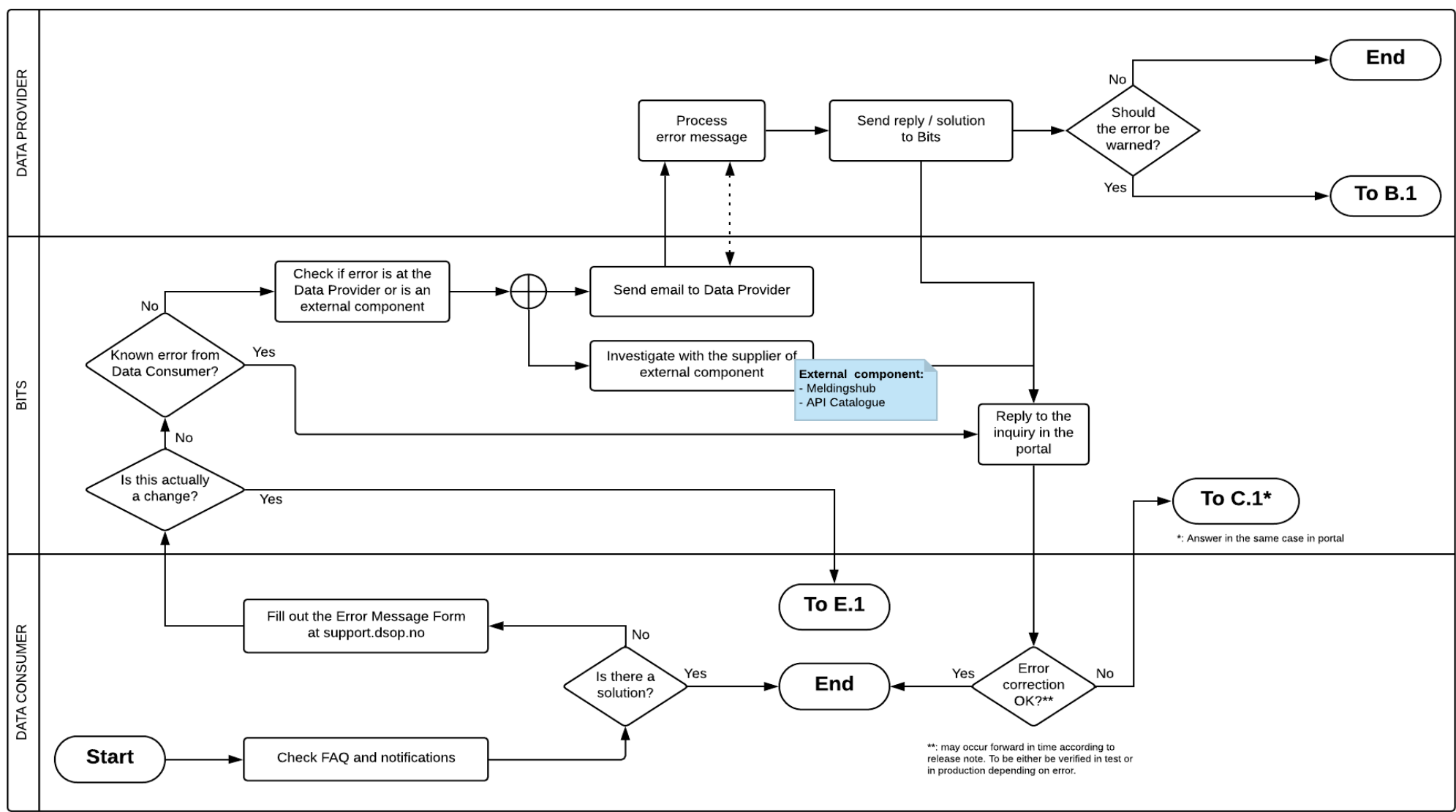
## Process overview



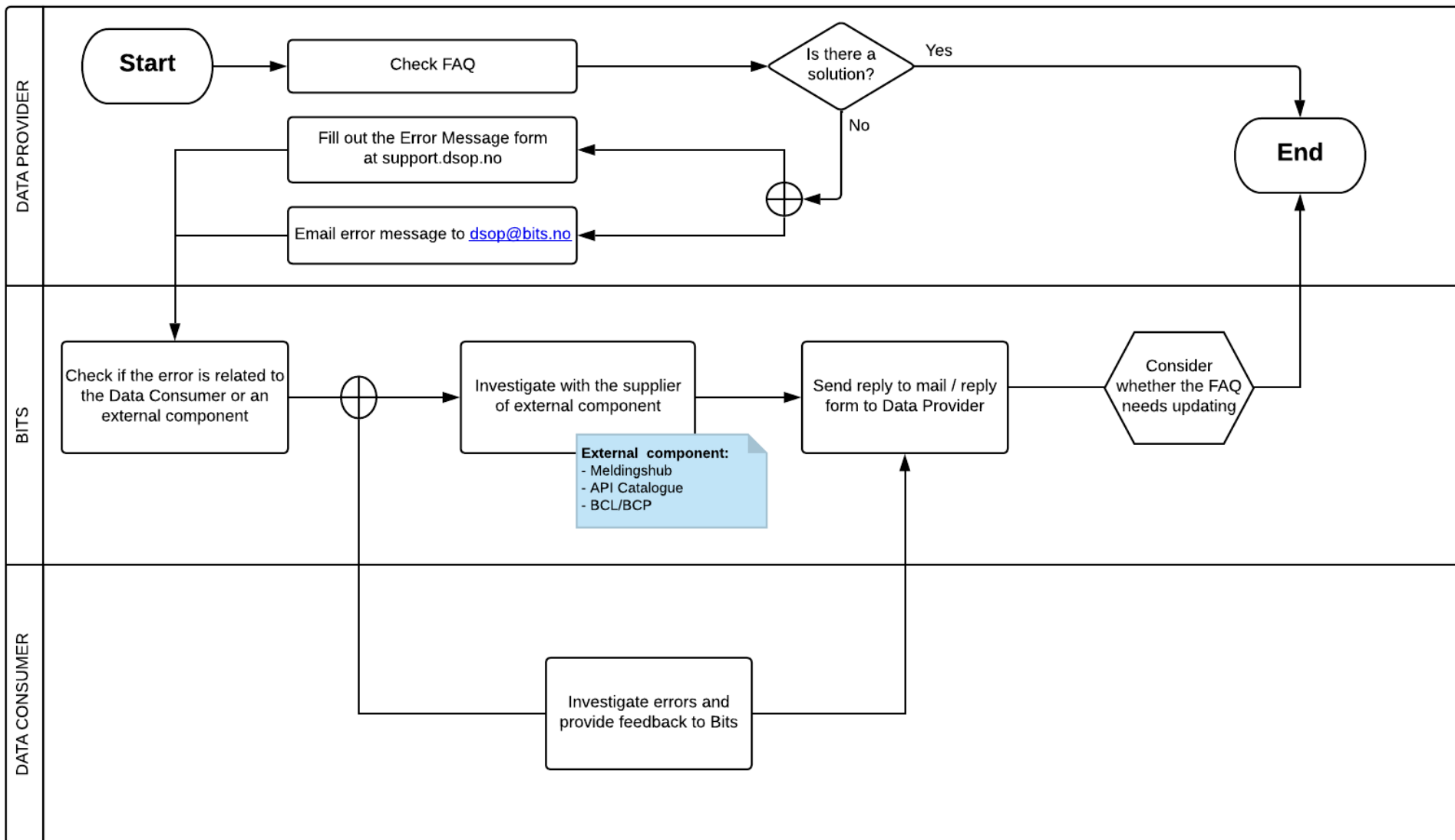
C.1  
Errors from Data Consumer

C.2  
Errors from Data Provider

# C.1 Errors from Data Consumer



# C.2 Errors from Data Provider



The image features a central logo for 'DSOP' in a bold, blue, outlined font. The logo is flanked by two blue curved lines, one above and one below. Below the logo, the text 'DIGITAL SAMHANDLING OFFENTLIG PRIVAT' is written in a smaller, blue, sans-serif font. The background is a light blue, abstract composition of a globe, binary code (0s and 1s), and a grid pattern. The globe is on the right side, and the binary code is scattered throughout. The overall aesthetic is modern and digital.

**DSOP**

DIGITAL SAMHANDLING OFFENTLIG PRIVAT